



"It's Your Nickel"

Construction Partnership

December 2005

DIRECTOR'S CORNER



It sure is hard to believe Thanksgiving is over and Christmas is just around the corner. The above average weather we had this fall made construction very pleasant and a great deal was accomplished

before the bad stuff rolled in. This should help us all in the spring to get started earlier on new projects. Looks like work should hold fairly well this winter for most trades, with some unemployment within certain crafts. I predict the spring newsletter should have good news with many jobs to be starting early in 2006; some the product of the long overdue 2004 bonding session.

This holiday season take the time to stop by or call an old friend or co-worker you haven't seen in a long time. Mend conflict, whether old or new, and take time to talk to a stranger who just needs minutes of your time.

I would like to wish each and everyone who reads this newsletter a happy holiday season and a very prosperous new year.



*Don De Keyrel
Executive Director*



What is a Partner?

As CPI officially enters its 13th year, it is only fitting that we take a few minutes to consider what a partnership really means to all of us. Webster's Dictionary defines a partnership as "a relationship of two or more people involving close cooperation between parties having specified and joint rights and responsibilities".

As a Labor Management Partnership, I think we all understand our roles in partnering between these two groups. Many times, however, we forget that within our partnership framework is a commitment to partnering within each group. In other words, a contractor-to-contractor partnership commitment and a union-to-union partnership commitment.

From a management perspective, an example of this commitment might be a referral of another CPI contractor when you're not able to meet a potential customer's needs due to scheduling or manpower.

From a trades union perspective, a good example of this would be to insure that work you claim does not rightfully belong to another trade. It is important to remind ourselves that as a partner we are each equal and independent, but each and every one of us has an obligation to each other.



RETIREES ANNUAL LUNCHEON

On Oct. 27th over 120 retirees gathered for the annual Building and Trades sponsored luncheon held at the Plumbers and Fitters hall. Many stories were told as good friends from all crafts visited while dining on a full course dinner complete with dessert. All had a good time and members mentioned those who could not come or were no longer with us. Until next year!



BRING YOUR HOLIDAY PARTY TO THE LABOR CLUB

Make the Labor Club your first choice for this year's Christmas, retirement or birthday party. It's the place to be. If you are a union contractor or construction worker please consider helping the club that helps you by booking a reservation today.

To reserve party a date just call Sue at 507-289-6923

To reserve a meeting date call Linda 507-282-4048

Mount

Congratulations to the Majerus family on having a mountain peak in Antarctica named after them. Nick Majerus, a sheet metal worker with Local #10, has been working at McMurdo Station on Ross Island in Antarctica for some of the year for the past 25 years. Other family members have followed suit and now there is a mountain peak on the continent named after them to prove it.

Majerus

Seasons Hospice

In the fall newsletter I failed to mention Weis Builders, one of the largest contractor supporters of Seasons Hospice, donating most of the materials and supplies. Thank you to Weis Builders and Barry Reeck for a job well done and to Seasons Hospice for the opportunity to help make a nice place for someone to reside in during their time of need. Check out these finished pictures. Also, to the right is a letter I received from Pam thanking everyone for their generosity.



Dear Don,
On behalf of Seasons Hospice Board of Directors, staff and volunteers I extend the most sincere thanks for the help of Construction Partnership in the renovation work of our Cabin in the Woods at Oxbow Park. Barry Reeck and the others from Construction Partnership helped bring shape to our vision and have made the cabin a beautiful, welcoming place for all those who are on a journey of grief. We are very grateful for your generous support of Seasons Hospice, not only with this project but your help with our Thrift Sale, and for all you do to make our community a great place to live.
Sincerely,
Pam Schaid



Pam Schaid, Kris Litzow, Barry Reeck



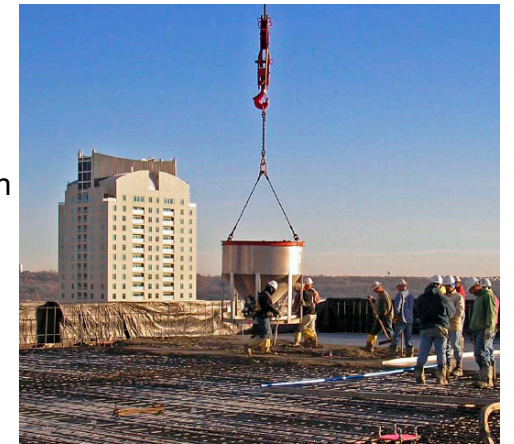
McGOUGH TOPS STABLE BUILDING

More than five years ago, McGough Construction was selected by Mayo Foundation to construct the Vincent A. Stabile Building located at 150 Third Street SW in the heart of downtown Rochester. The original design allowed for a future vertical expansion of three floors if the structure were to be concrete or four floors if the structure were to be structural steel. At Substantial Completion in August 2001 it was remarked by Mayo that a vertical expansion would not happen for another 12-15 years, if at all. Then along came *The Minnesota Partnership for Biotechnology and Medical Genomics Research*. This progressive partnership between Mayo and the University of Minnesota was created to forge a new course in the field of medical genomics. With Governor Pawlenty making a personal commitment to the viability of genomics research, Mayo and the U of MN have set an aggressive pace with their collaborative spirit.



In May of 2003 Mayo entered into a partnership with McGough to evaluate various scenarios for this new research facility. Cost models were developed to reflect new construction at a remote site, remodeled space at a remote site, new construction at an adjacent site, and a vertical expansion atop the existing Stabile Building. After months of dialogue and analysis, Mayo elected to move forward with a vertical expansion of four floors with the stipulation that the structure must be concrete. In order to comply with this requirement, McGough relied to its previous experience in lightweight structural concrete construction. Working with MJB Engineers, a full scale mock-up panel was constructed to test the workability and strength of lightweight structural concrete. Making every effort to simulate all relevant site conditions, the mock-up panel was cast at 26 feet by 26 feet, and nearly 6 feet high. Rochester Ready Mix obtained aggregate specifically formulated for lightweight structural concrete that was barged to Minneapolis then trucked to Rochester. Braun-Intertec was retained to perform moisture readings and strength testing through the full 56-day mock-up cycle. The result: lightweight structural concrete performed better than expected and provided the necessary reduction in dead load required by the structural engineer.

Construction on the Stabile Expansion project began in June 2005. On Friday, November 11, 2005, the south half of the 14th floor slab was placed and finished, representing completion of the concrete structure. McGough hosted a luncheon for all construction personnel as a way of recognizing their efforts in achieving this significant milestone. McGough found that by using two 5-yard concrete buckets to convey material to the floor decks instead of pumping, productivity was increased by approximately 40%.



Construction is progressing on schedule and under budget. Completion of the Core & Shell enclosure is expected in March 2006. Substantial Completion and Owner occupancy is scheduled for November 2006.



Visit our WEB site at www.constructionpartnership.com

'Twas the Month Before Christmas

'Twas the month before Christmas, the years winding down
Take a walk with me as I tour our great town;
Construction is steady, projects abound,
The warm fall weather has let us dig ground.

Mayo Clinic, as usual, is filling the bill
A new Employees Credit Union and the top of the Stabile;
The Sister's of Assisi quarters are getting a new look
And an accessible new entry, no it's not for the cook.

Mr. Pizza is expanding to the north side of town,
Was that a crust I just heard fall to the ground?
House Chevrolet expansion and the new Rochester Market Square
Are adding new dimension to the south as they rise in the air.



As I stroll past Methodist, the site is a flurry
Better pick up the pace, I must hurry.
The Waste Water Treatment Plant, a much needed addition
And the County Steam Line; both keep us in good condition.

Rochester Assembly of God and First Baptist Church
I speed on past and catch myself with a lurch,
I head out of town and find Austin Medical Center and Brown Printing
My, my, my, I laugh, I am almost sprinting!

I look and I ponder and I feel real good
Union construction is everywhere, as I was sure that it would;
The union workers of Rochester are a proud bunch
And they always will be, I have a hunch.

Wishing you health and happiness in the New Year,
And an abundance of joy with your family near,
As I finish my tour and head out of site

Happy Christmas to All, and to All a Good-Night!